

食品级单层凯夫拉纤维编织硅胶管

Food grade single-layer Kevlar fiber braided silicone hose

BK20

材质结构:

内层: 红色食品级铂金硅胶
 外层: 蓝色食品级铂金硅胶
 增强层: 单层凯夫拉纤维编织网

Material structure:

Inner layer: red food grade platinum silica gel
 Outer layer: blue food grade platinum silica gel
 Reinforcing layer: single-layer Kevlar fiber woven mesh

尺寸规格:

内径: Ø5mm--32mm (支持定制)
 标准长度: 20M
 工作温度范围: -70°C / +260°C

Dimensions:

Internal diameter: Ø3mm---38mm(Support customization)
 Standard length: 20M
 Length operating temperature range: -60°C / +200°C

产品特点优势

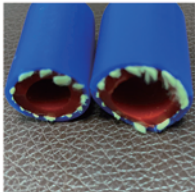


适用流体类型



外观:

内外壁光滑
 Smooth inner and outer walls



产品应用:

广泛用于食品, 乳制品, 食品用油类、化妆品、化工, 制药行业和生物工程用的液体或半液体流体的输送, 常见于食品机械设备用连接管; 酒类用连接导管; 油类设备抽吸用的连接管, 医药设备连接管路、导管等。DIN, CLAMP快速接头。

Product application:

It is widely used in the transportation of liquid or semi liquid fluids for food, dairy products, food oils, cosmetics, chemical industry, pharmaceutical industry and bioengineering, and is commonly used in connecting pipes for food machinery equipment; Connecting catheter for liquor; Connecting pipes for oil equipment suction, medical equipment connecting pipes, conduits, etc. DIN, CLAMP quick connector.

品名 PART NAME	内径 INNER DIA		厚度 WALL THICKNESS		外径 OUTER DIA		工作压力 WORK PRESSURE		爆破压力 BURST PRESSURE		弯曲度 CURVATURE		真空度 VACUUM	
	mm	inch	mm	inch	mm	inch	bar	psi	bar	psi	mm	inch	bar	psi
BK20-005	5.00	13/64"	4.00	0.46	13.00	0.50"	21.25	308.13	63.75	924.38	28	1.12	1.00	14.50
BK20-006	6.35	1/4"	4.83	0.19	16.01	0.625"	17.75	257.38	53.25	772.13	33	1.30	1.00	14.50
BK20-008	7.92	5/16"	5.05	0.20	18.02	0.71"	16.25	235.63	48.75	706.88	38	1.50	1.00	14.50
BK20-009	9.52	3/8"	5.30	0.21	20.12	0.79"	15.25	221.13	45.75	663.38	45	1.77	0.93	13.49
BK20-012	12.70	1/2"	5.15	0.20	23.00	0.91"	14.00	203.00	42	609.00	55	2.16	0.91	13.19
BK20-015	15.80	5/8"	5.60	0.22	27.00	1.06"	12.75	184.88	38.25	554.63	63	2.50	0.89	12.91
BK20-019	19.05	3/4"	5.73	0.23	30.51	1.21"	11.75	170.38	35.25	511.13	76	3.00	0.79	11.45
BK20-022	22.30	7/8"	5.50	0.22	33.20	1.31"	9.50	137.75	28.5	413.25	102	4.00	0.50	7.25
BK20-025	25.40	1.00"	5.80	0.23	37.30	1.47"	7.90	114.55	23.7	343.65	125	4.92	0.40	5.80
BK20-032	31.75	1-1/4"	7.13	0.28	46.00	1.81"	7.30	105.85	21.9	317.55	190	7.48	0.15	2.18

Food Grade Silicone Hose